

McLeod Network Management

Try it on us for 15 Days for FREE

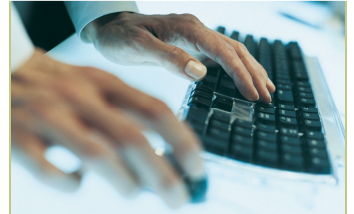
Let us manage your network, so you can manage your business.



24/7 MONITORING | PC & SERVER MAINTENANCE

A Proactive Approach to IT Support Services.

Our proactive monitoring system watches your network, servers, and workstations 24/7 keeping you ahead of any looming problems. In the event of a failure, you will be notified immediately and an experienced tech will be assigned to the case. In most instances, we can even fix the problem remotely saving you money and critical downtime.



We want you to experience service like you've never had.

We are offering a 15 Day trial of our basic service for your computer network. It covers basic monitoring and basic maintenance of your computers and server. You will have access to help desk and remote support services, and we will provide a detailed report on your network and computer systems health at the end of the trial. Limited to 20 devices.

During the trial you will also receive a 20% discount on any labor needed to correct existing problems. We will also notify you of any upgrades or service needed to solidify your computer and network systems, and provide a written proposal.

- 24/7 Network Monitoring
- Virus and Spyware Removal
- System Patches and Updates
- Live Help-Desk Support
- PC and Server Maintenance
- Data Back-up and Recovery
- Disaster Recovery Service
- Firewall Monitoring Support
- Network Printer Support
- Alerting of critical issues
- Dedicated Personnel

- *The trial does not include remediation of existing or discovered problems.
- * Help desk service is limited to user help and non-corrective or training issues.
- *A specified employee at the customers location must help with installation of agents to qualify for no set-up charge of trial network.

McLeod Network Management

fast | automated | effective

8448 Reseda Blvd, Suite 106
Northridge, Ca 91324

Phone: 818.886.2566 | Fax: 818.886.1124
www.mcleodcomputers.com